

MAXIMATOR®

Maximum Pressure.

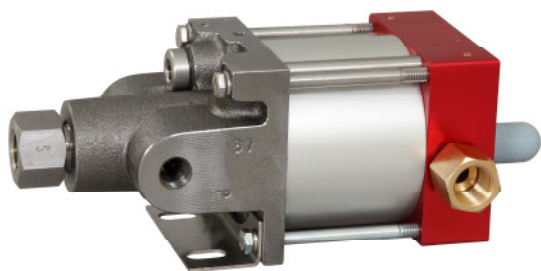


High Pressure Technology • Testing Equipment
Hydraulics • Pneumatics

Technical Data Sheet

MO37

» Oil service



MO37
Single acting, single air drive head
(Standard= Bottom inlet)

Technical Data:

Air drive pressure: 1-10 bar / 14,5 - 145psi

Calculated Outlet Pressure at an air drive of 10 bar/145 psi: 470 bar/ 6,816 psi

Pressure ratio: 1:47

Displacement volume/double stroke 2.8 cm³/ 0.17 cu.inch

Connections:

Inlet: Standard: Bottom Inlet 3/8 BSP

Outlet: 1/4 BSP

Air drive: 3/8 BSP

Maximum operating temperature: 60°C

Net weight: 3.0 kg

Pressure and flow performances, please see enclosed graph.

Wetted materials of construction:

Top cap: Aluminium

Air cylinder: Aluminium

Seal package: Polyurethane, NBR

Pump Body: GGG50

Piston: 1.4112 (hardened)

Approximate Dimensions:

Height: 195 mm

Depth: 104 mm

Width: 112 mm

Available Options:

Side inlet MO37S

External pilot port modification MO37-DIR

Special inlet and outlet ports, i.e. NPT MO37-NPT

Special seal material to handle special fluids on request.

Available Accessories:

Air control units with filter pressure regulator, control pressure gauge and shut off valve: MO37 with C1

To protect the pump against excessive outlet pressures or to limit the outlet pressure, a safety valve can be fitted to the air control unit in the air drive line: MO37 with C1/SVair (The required outlet pressure has to be indicated.)

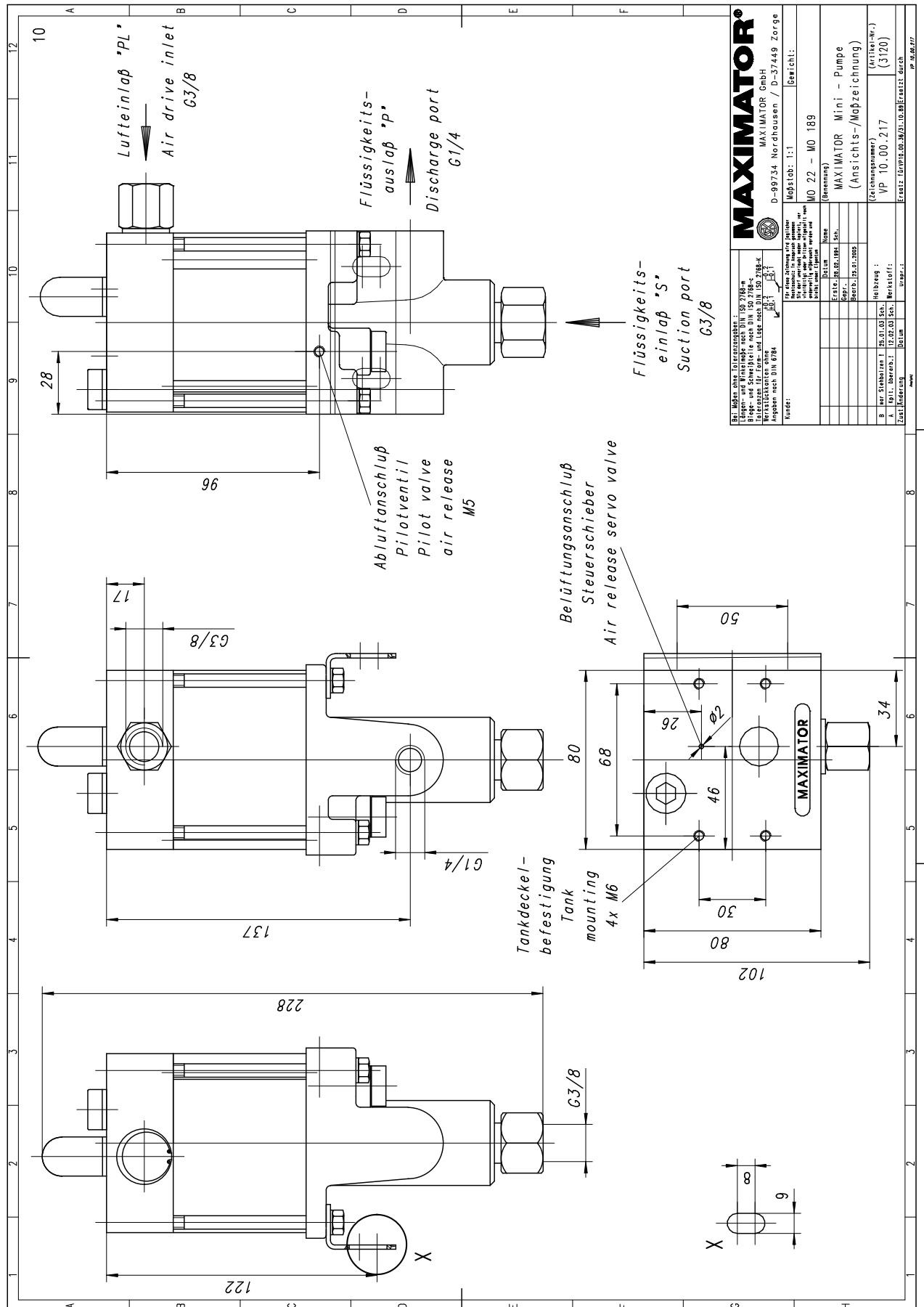
Please consult factory for more information. All technical and dimensional information subject to change. All General Terms and Conditions of sale, including limitations of our liability, apply to all products and services sold.

MAXIMATOR®

Maximum Pressure.



High Pressure Technology • Testing Equipment
Hydraulics • Pneumatics



Leistungsdiagramm/Performance Graph M(O)(SF) 37

Prüfflüssigkeit/Test Liquid: Wasser-Öl-Emulsion/Water Oil Emulsion ca. 1 - 10 cst

