

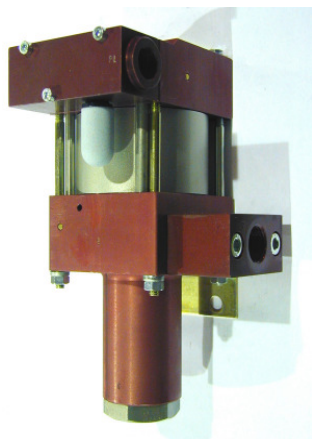
MAXIMATOR®

Maximum Pressure.



High Pressure Technology • Testing Equipment
Hydraulics • Pneumatics

Technical Data Sheet



M8 (L)
single acting, single air drive head
(Standard= Bottom inlet)

M8 (L) » Oil service
M8 (L) VE » Water service

Technical Data:

Air drive pressure:	1-10 bar / 14,5—145 psi
Calculated Outlet Pressure at an air drive of 10 bar/145 psi:	90 bar/ 1,305 psi
Pressure ratio:	1:9
Displacement volume/double stroke	14.7 cm ³ / 0.09 cu.inch

Connections:

Inlet:	Standard: Bottom Inlet 3/4 BSP
Outlet:	1/2 BSP
Air drive:	3/8 BSP
Maximum operating temperature:	60°C
Net weight:	3.0 kg

Pressure and flow performances, please see enclosed graph.

Wetted materials of construction:

Seal package:	M8(L): Polyurethan, NBR M8(L)VE: UHMWPE, FKM
Pump Body:	AlMgSiPB anodized
Piston:	1.8112
Fittings:	Inlet: 1.8305 Outlet: AlMgPbCu anodized

Approximate Dimensions:

Height:	209 mm
Depth:	120 mm
Width:	112 mm

Available Options:

Seal material for oil service:	M8(L)
Seal material for water service:	M8(L)VE
Special inlet and outlet ports, i.e. NPT	M8(L)-NPT M8(L)VE-NPT
Special seal material to handle special fluids on request.	

Available Accessories:

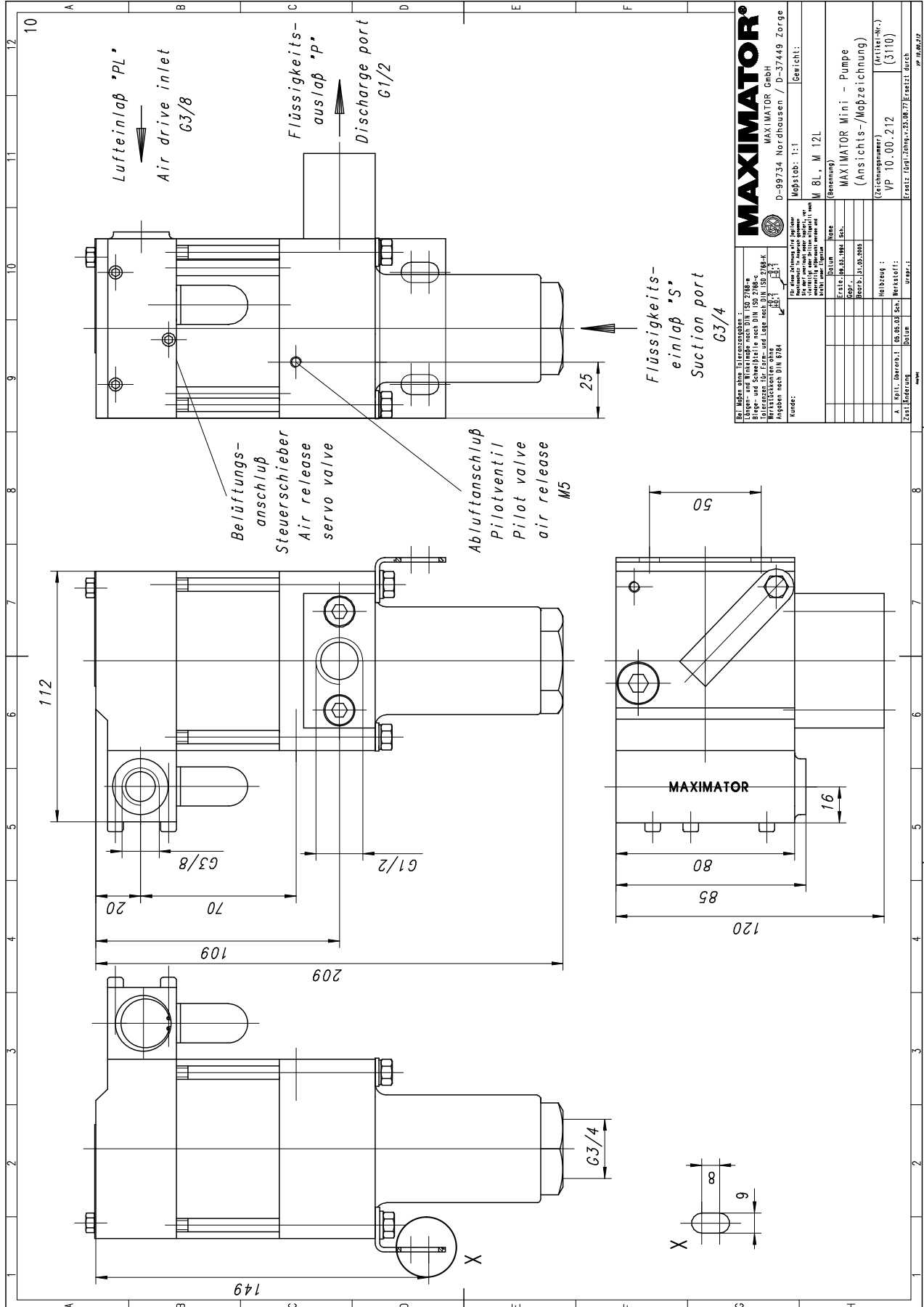
Air control units for M series with filter pressure regulator, control pressure gauge and shut off valve:	M8(L) with C1
To protect the pump against excessive outlet pressures or to limit the outlet pressure, a safety valve can be fitted to the air control unit in the air drive line:	M8(L) with C1/SVair (The required outlet pressure has to be indicated.)

Please consult factory for more information. All technical and dimensional information subject to change. All General Terms and Conditions of sale, including limitations of our liability, apply to all products and services sold.

MAXIMATOR®
Maximum Pressure.



High Pressure Technology • Testing Equipment
Hydraulics • Pneumatics



Leistungsdiagramm/Performance Graph M(O)(SF) 8

Prüfflüssigkeit/Test Liquid: Wasser-Öl-Emulsion/Water Oil Emulsion ca. 1 - 10 cst

