

MAXIMATOR®

Maximum Pressure.



High Pressure Technology • Testing Equipment
Hydraulics • Pneumatics

Technical Data Sheet

M189-3 (L)

» Oil and Water service



M189-3 (L)
single acting, tripple air drive head
(Standard= Bottom inlet)

Technical Data:

| | |
|---|------------------------------------|
| Air drive pressure: | 1-10 bar / 14,5—145 psi |
| Calculated Outlet Pressure at an air drive of 10 bar/145 psi: | 4,000 bar/ 58,000 psi |
| Pressure ratio: | 1:660 |
| Displacement volume/double stroke | 0.6 cm ³ / 0.04 cu.inch |

Connections:

| | |
|--------------------------------|--------------------------------|
| Inlet: | Standard: Bottom Inlet 1/4 BSP |
| Outlet: | 9/16-18UNF |
| Air drive: | 3/8 BSP |
| Maximum operating temperature: | 60°C |
| Net weight: | 4.6 kg |

Pressure and flow performances, please see enclosed graph.

Wetted materials of construction:

| | |
|---------------|-----------------------------|
| Seal package: | M189-3(L): Polyurethan, NBR |
| Pump Body: | 1.4305 |
| Piston: | 1.4112 (hardened) |
| Fittings: | 1.4104 |

Approximate Dimensions:

| | |
|---------|--------|
| Height: | 255 mm |
| Depth: | 100 mm |
| Width: | 112 mm |

Available Options:

| | |
|--|---------------|
| Side inlet | M189-3(L)S |
| Special inlet ports, i.e. NPT | M189-3(L)-NPT |
| Special seal material to handle special fluids on request. | |

Available Accessories:

Air control units for M series with filter pressure regulator, control pressure gauge and shut off valve: M189-3(L) with C1

To protect the pump against excessive outlet pressures or to limit the outlet pressure, a safety valve M189-3(L) with C1/SVair (The required outlet pressure has to be indicated.) can be fitted to the air control unit in the air drive line:

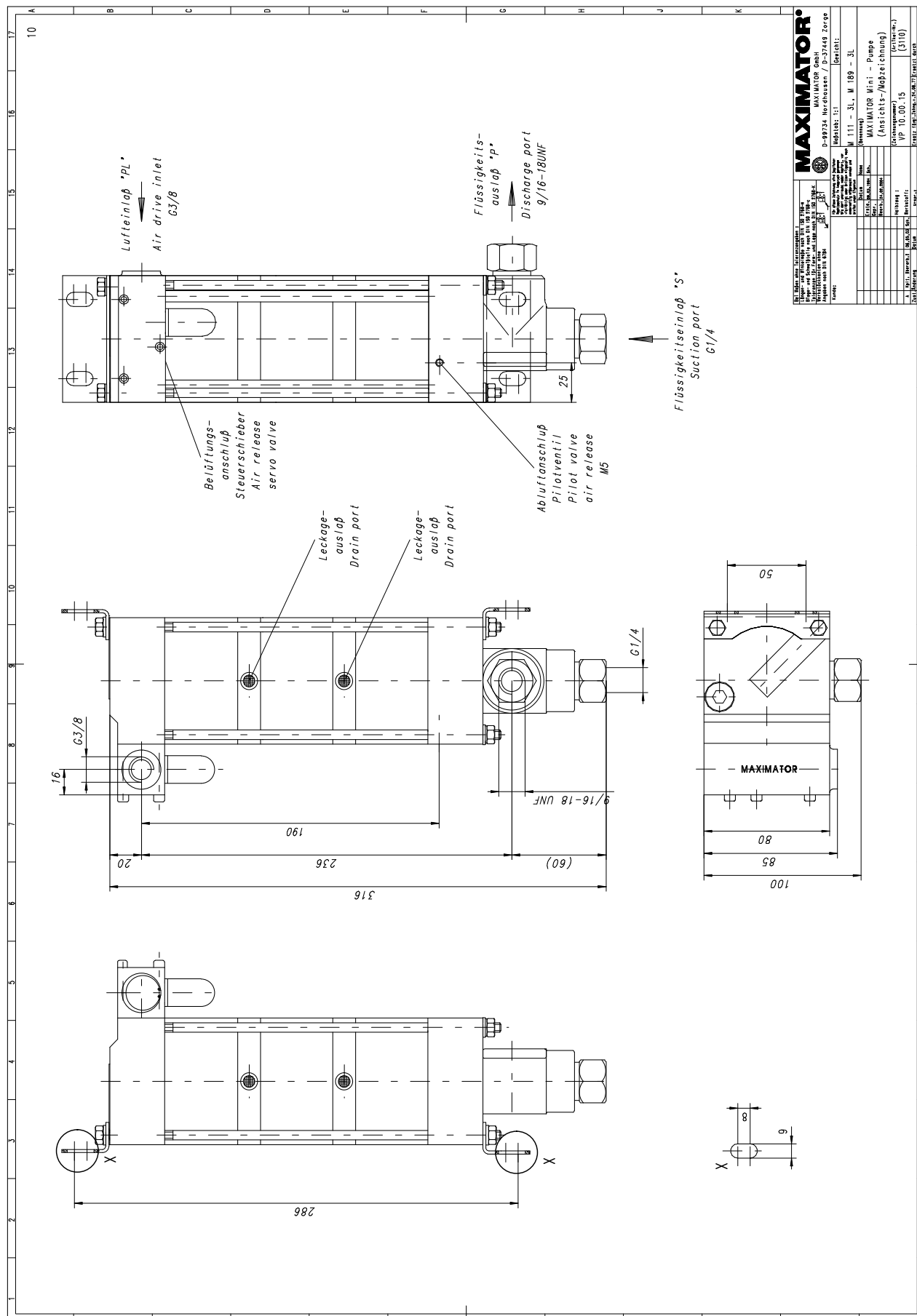
Please consult factory for more information. All technical and dimensional information subject to change. All General Terms and Conditions of sale, including limitations of our liability, apply to all products and services sold.

MAXIMATOR®

Maximum Pressure.



High Pressure Technology • Testing Equipment
Hydraulics • Pneumatics



Leistungsdiagramm/Performance Graph M 189 -3L

Prüfflüssigkeit/Test Liquid: Wasser-Öl-Emulsion/Water Oil Emulsion ca. 1 - 10 cst

